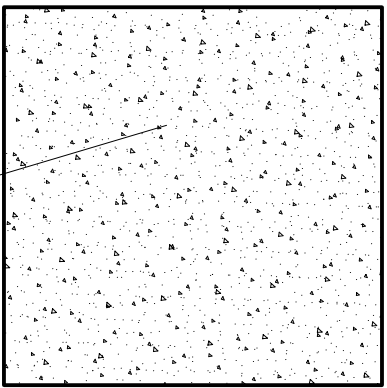


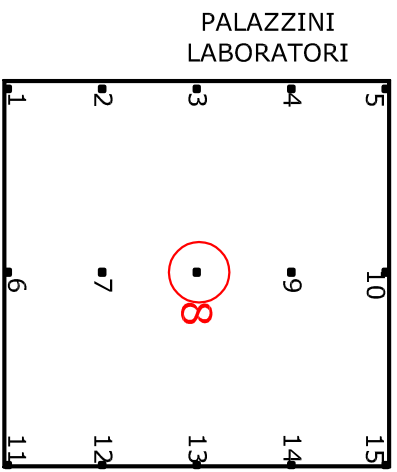
PILASTRO N. 8

STATO ATTUALE

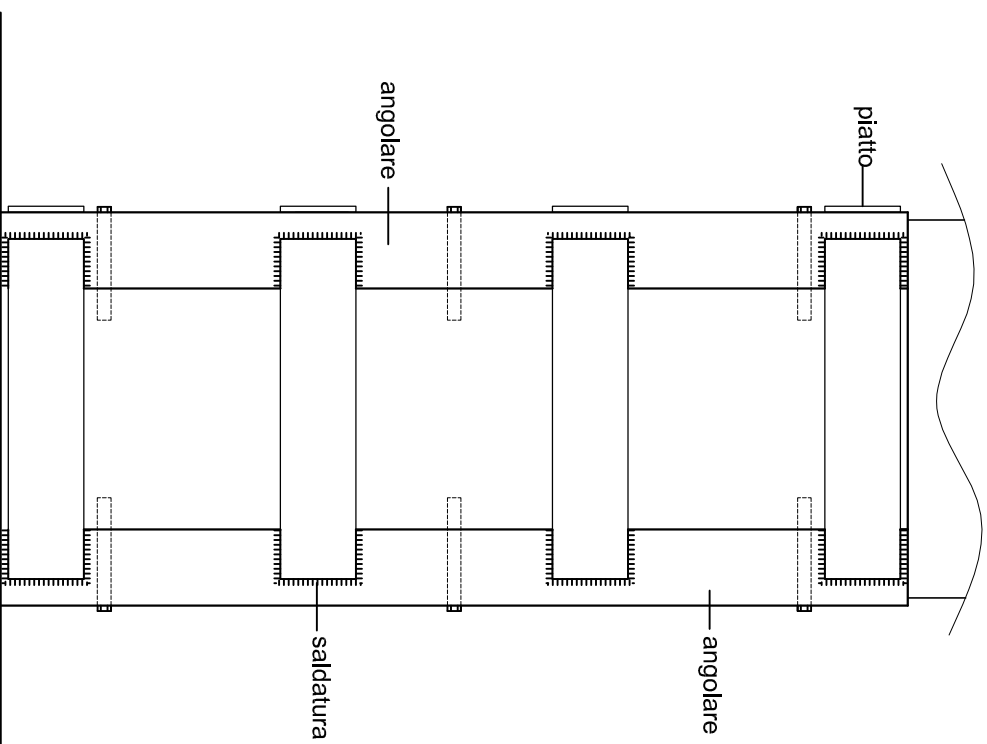


pilastro 50x50

PIANTA PILASTRI

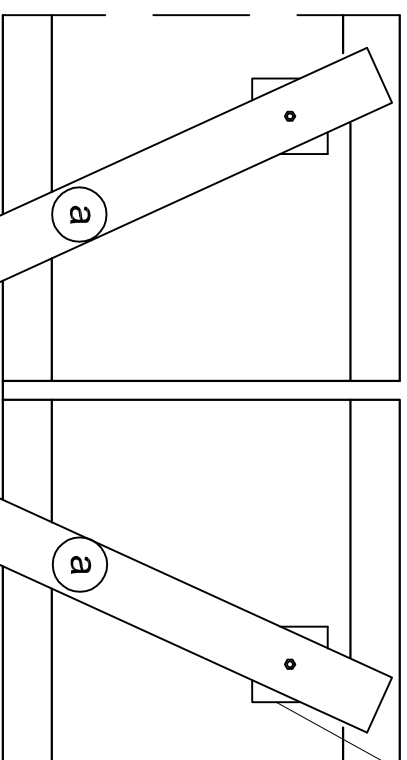


INCAMICIATURA PILASTRI

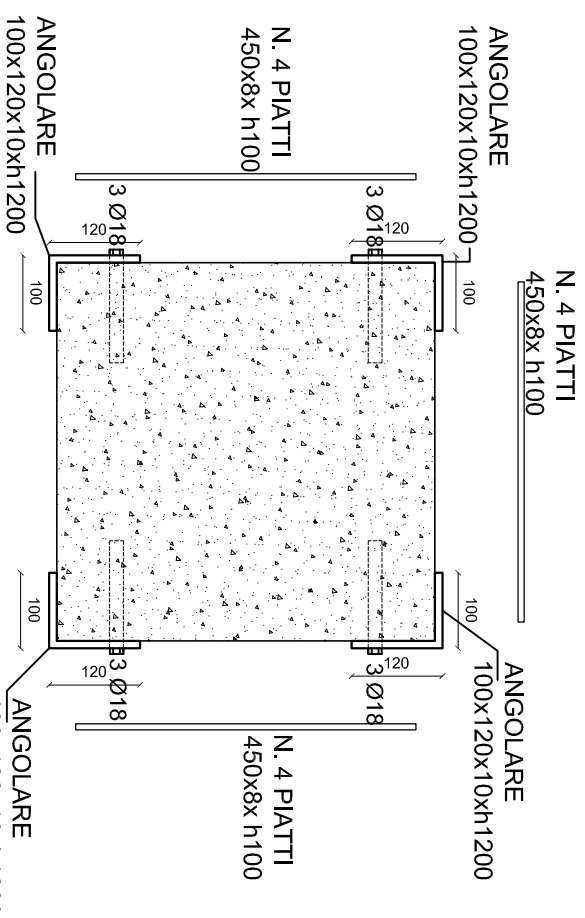
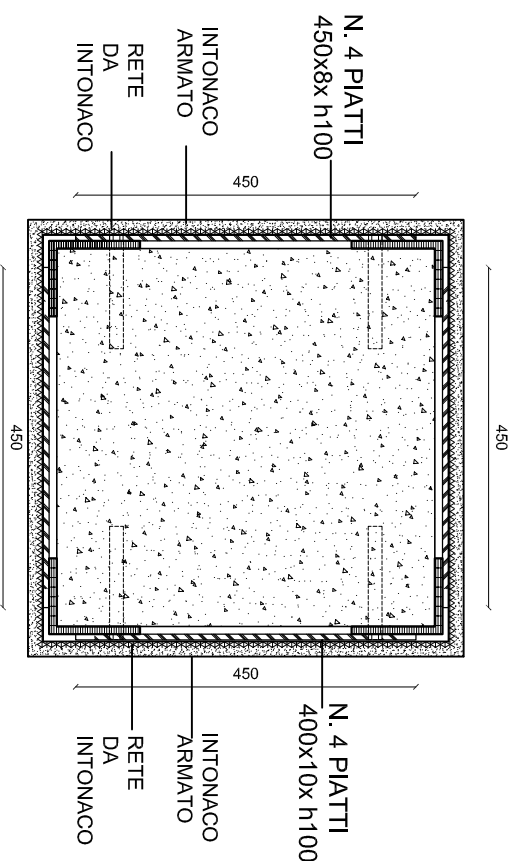
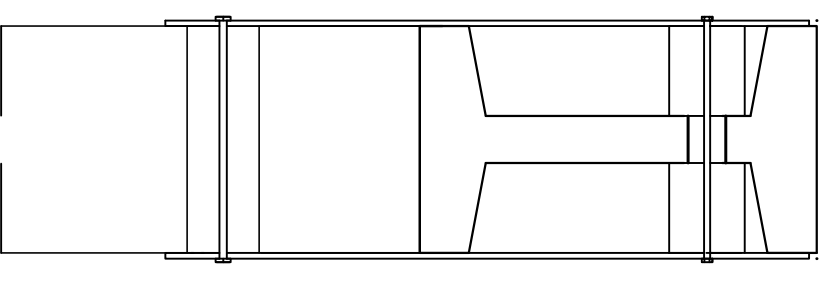


COLLEGAMENTO FRA TRAVI PRINCIPALI E PILASTRI

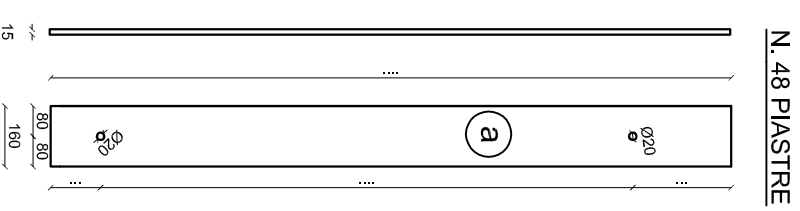
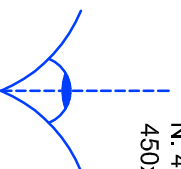
In questo particolare collegamento si è deciso di utilizzare piastre in acciaio S 235, bulloni M16 (classe 8.8) con barre passanti di 20 mm di diametro (classe 8.8).



Tamponi in materiale plastico ad alta resistenza 200x200 mm x (spessore da rilevare)



N. 4 PIATTI 450x8x h100



LUNGHEZZE DA VERIFICARE

Studio C

di Ing. Chierici Paolo

43126 Parma - Via Reggio, 8
Tel. 0521.782779
E-mail: studioc.parma@libero.it
P. IVA 02733800342