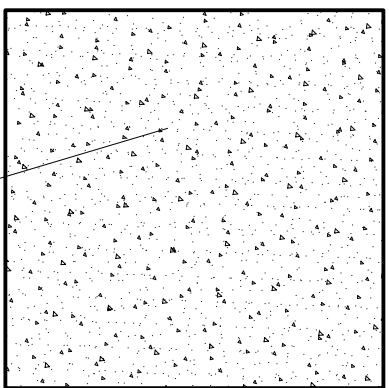


# PILASTRO N. 4

## COLLEGAMENTO FRA TRAVI PRINCIPALI E PILASTRI

STATO ATTUALE

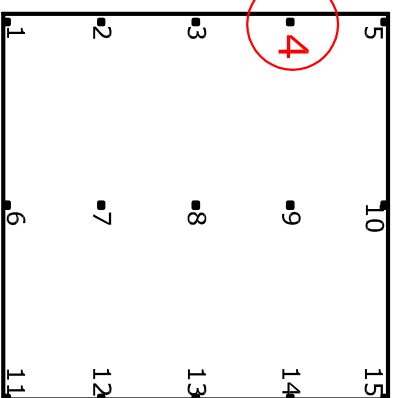


pilastro 50x50

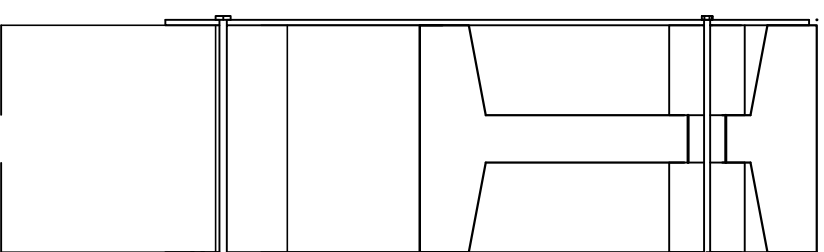


PIANTA PILASTRI

PALAZZINI  
LABORATORI



vista 1

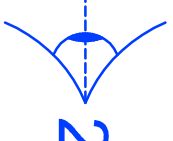
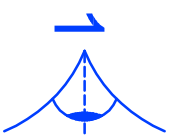


In questo particolare collegamento si è deciso di utilizzare piastre in acciaio S 235, bulloni M16 (classe 8.8) con barre passanti di 20 mm di diametro (classe 8.8).

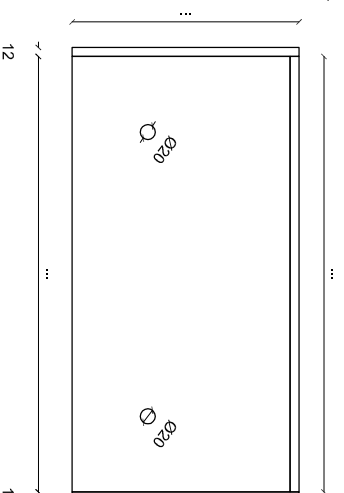
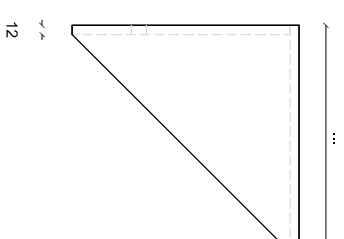
Tamponi in materiale plastico ad alta resistenza 200x200 mm x (spessore da rilevare)

foro presente sulla trave

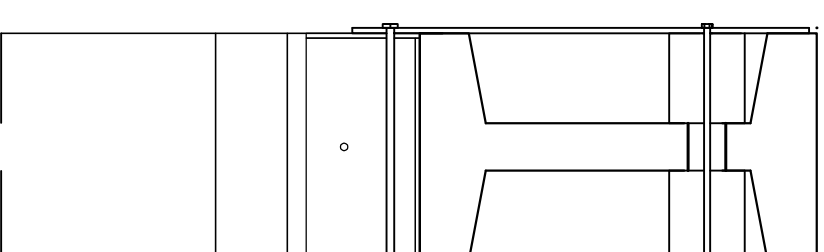
foro presente sulla trave



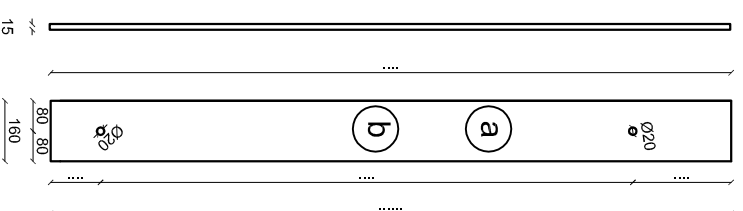
foro presente sul pilastro



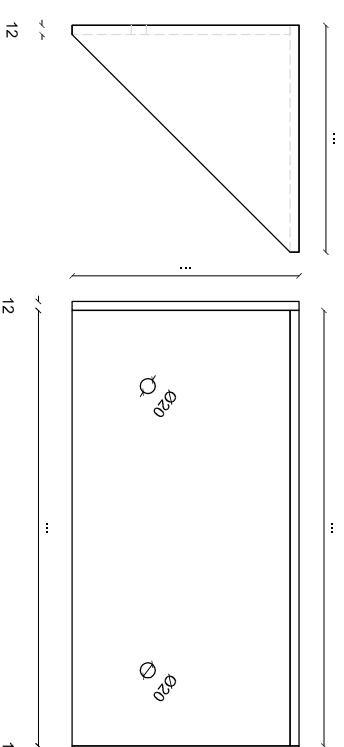
vista 2



LUNGHEZZE  
DA  
VERIFICARE



DIMENSIONI  
DA  
VERIFICARE



# Studio C

di Ing. Chierici Paolo

43126 Parma - Via Reggio, 8  
Tel. 0521.782779  
E-mail: [studloc.parma@libero.it](mailto:studloc.parma@libero.it)  
P. IVA 02733800342